

14

Chapter

CULTURAL AND SOCIAL FACTORS SHAPING THE ACCEPTANCE OF VARIED SEXUAL ORIENTATIONS IN INDIAN SOCIETY: AN ECONOMIC PERSPECTIVE

Dr. Vikas Deepak Srivastava*

*Assistant Professor, Glocal School of Business &
Commerce, Glocal University, Saharanpur, U.P.*

**Correspondence to: vikas.srivastava@theglobaluniversity.in*

Dr. Shiv Kumar

*Assistant Professor, Department of Commerce,
Kalicharan P.G. College, University of Lucknow.*

Email: dr.shivkumarg@gmail.com

Prabhu Narain Srivastava

*Associate Faculty, Entrepreneurship
Development Institute of India, Gandhinagar, Gujrat.*

Email id: shriprabhu2021@gmail.com

DOI: <https://doi.org/10.52458/9789388996969.nsp2023.eb.ch-14>

Ch.Id:-GU/NSP/EB/ESTDCI/2023/Ch-14

ABSTRACT

This exploratory study is analytical approach at the financial aspects of social and cultural variables on the discernment and acknowledgment of different sexual orientations in India. The review investigates verifiable and diverse viewpoints on sexual directions, featuring the impact of imperialism and strict convictions in forming perspectives towards non-hetero directions in agricultural countries. It explicitly centers around the effect of English provincial rule in India, which condemned homosexuality through the presentation of Area 377 in the Indian Corrective Code in 1861. The minimization and segregation looked by LGBTQIA+ people in moderate social orders with well-established strict norms are additionally discussed about. The theoretical additionally specifies the sluggish development of mentalities and comprehension of sexual directions, with activism and support endeavors testing biased regulations and bringing issues to light about the freedoms of LGBTQIA+ people. The theoretical gives twofold relapse results because of orientation, schooling level, occupation, and LGBTQIA communication on discernments about sexual direction. The examination shows that orientation doesn't altogether affect insights, while instruction level and occupation yield blended results that are not measurably critical. Be that as it may, people who have connected with LGBTQIA people show a huge expansion in the chances of Indian culture's impact. In general, the theoretical reveals insight into the mind-boggling transaction between social, cultural, and monetary variables in molding discernments and acknowledgment of different sexual directions in India, featuring the requirement for additional exploration to investigate these elements top to bottom.

Keywords: *LGBTQIA + Community, Sexual Orientation, GMV, Neuroscience Approach, Binary Logistic Regression Model.*

14.1 INTRODUCTION

Sexual inclinations have been communicated and recognized diversely across various social orders over the entire course of time. Antiquated Greece viewed same-sex connections as normal and satisfactory, proved by texts like Plato's Conference. In old China, homosexuality was in some cases celebrated, as found in verse from the Tang Line. Then again, a few social orders, like middle age Europe, frequently denounced same-sex connections and homosexuality, thinking of it as a wrongdoing. Multifaceted examination gives significant knowledge into the assorted viewpoints on sexual directions in various authentic periods. Sexual directions in agricultural countries have been affected by different verifiable variables. Expansionism left a critical effect on these social orders, forcing Western standards and standards with respect to sexuality. Subsequently, non-hetero directions and practices that were once acknowledged or endured were slandered and condemned. For example, English provincial rule in India condemned homosexuality through the presentation of Area 377 in the Indian

Reformatory Code in 1861, naming it as "unnatural," affecting the discernment and treatment of homosexuality in the country (Sekaran and Bougie, 2016).

Besides, strict and social convictions have likewise assumed an imperative part in molding mentalities towards non-hetero directions in emerging countries. In numerous moderate social orders, where strict qualities are well established, homosexuality and other non-hetero directions are viewed as against social and strict standards. This has prompted the minimization and segregation of people who distinguish as LGBTQIA+. Nonetheless, it is fundamental for note that perspectives and comprehension of sexual directions have developed as of late, but at a sluggish speed. Activism and backing endeavours, upheld by worldwide common freedoms systems, have tested oppressive regulations and brought issues to light about the privileges of LGBTQIA+ people in these social orders (Mitra, 2017).

Types of sexual orientation

- **Heterosexual:** Attraction towards the opposite sex
- **Homosexual:** Attraction towards the individuals of the similar gender status.
- **Bisexual:** Attraction towards the individuals of similar and different sex.
- **Pansexual:** Attracted to individuals regardless of their gender identity or biological sex.
- **Asexual:** Experiences little to no sexual attraction towards others.
- **Demi sexual:** Experiences sexual attraction only after developing a deep emotional bond with someone.
- **Queer:** A sort of person tend to show repulsive sentiment to societal approved sexual exposition
- **Polysexual:** attraction towards different genders together but not in simultaneous way.
- **Androgynosexual:** when both masculine and feminine virtues draw of different sexual orientation
- **Skoliosexual:** Attracted to individuals who identify as non-binary or transgender.
- **Graysexual:** Experiences little to occasional sexual attraction towards others.
- **Autosexual:** sexual orientation to oneself.

- **Sapiosexual:** strong attraction of intellectual and intelligent features exhibited in individual
- **Polyamorous:** Capable of loving and having intimate relationships with multiple partners simultaneously.
- **Questioning:** Uncertain or exploring one's own sexual orientation and attraction.

There is a developing collection of proof recommending a connection between brain instruments and sexual directions. Neuroimaging studies have tracked down primary and utilitarian contrasts in the cerebrums of people with various sexual directions. Concentrate on utilizing X-ray examines found that gay men had a bigger hypothalamic volume contrasted with hetero men (Cannon, 2019). The nerve center assumes an essential part in different sexual ways of behaving and is accepted to be engaged with sexual direction. Additionally, studies have likewise detailed contrasts in brain reactions to sexual boosts between people with various sexual directions. Utilizing utilitarian X-ray, one investigation discovered that gay men show unmistakable enactment designs in mind districts related with physical allure contrasted with hetero men (Creswell, 2017). These discoveries recommend that there might be basic neurobiological factors impacting sexual direction. Nonetheless, it is vital to take note of that sexual direction is mind boggling and probable impacted by a blend of hereditary, hormonal, and natural variables. Further examination is expected to comprehend the unpredictable connection between brain systems and sexual directions completely (Rahman, 2017).

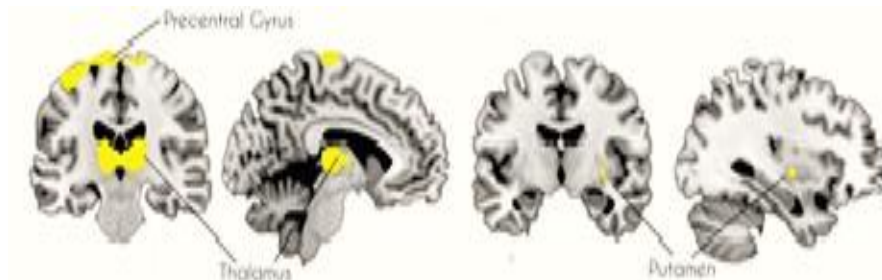


Figure-14.1: Homosexual Orientation Displayed Reduced Gray Matter Volume (GMV)

Source: www.nature.com/articles/s41598-021-84496-z#citeas

The above diagrammatic representation shows that Individuals with a homosexual orientation displayed reduced Gray Matter Volume (GMV) in the

cerebellum and premotor cortex, regardless of their biological sex, when compared to heterosexual individuals.

14.2 OBJECTIVE OF THE STUDY

1. To examine the neural mechanisms underlying the perception and acceptance of diverse sexual orientations in Metropolitan City individuals.
2. To explore the statistical association between socio-demographic characteristics (such as age, gender, education level and the acceptance of diverse sexual orientations in selected sample respondents).

14.3 LITERATURE REVIEW

Knutson et al. (2020) explored the job of culture in molding mentalities toward sexually open people. The scientists found that social factors like independence, community, orientation populism, and legalism essentially impact the acknowledgment and view of sexually unbiased directions. Understanding social varieties can help with creating designated mediations to diminish bias and separation.

Byrne et al. (2019) investigated the impact of cultural elements on the psychological wellness of LGBT people. It features the adverse consequence of social standards, cultural perspectives, and separation on the insight and acknowledgment of sexual directions. The review underlines the requirement for comprehensive strategies and steady friendly conditions to further develop psychological wellness results for LGBT populaces.

Donnelly et al. (2019) analyzed the impact of social variables on open perspectives toward homosexuality in various nations. The specialists found significant varieties in acknowledgment levels across societies, with factors like schooling, legalism, urbanization, and political philosophy assuming a critical part. The discoveries stress the significance of social setting in molding mentalities and illuminating approach mediations.

Ochs et al. (2018) investigated the impact of social and orientation personality factors on the coming-out encounters and impression of guardians with LGBT youth. The exploration featured the effect of social standards, strict convictions, and orientation assumptions on parental acknowledgment and understanding. Understanding the interconnection of social and orientation personalities can add to creating strong relational peculiarities and advancing acknowledgment.

14.4 RESEARCH METHODOLOGY

Age is a significant variable as it gives bits of knowledge into the different life stages and encounters of the respondents under study. Understanding the orientation piece of the example is pivotal as it can assist with distinguishing any expected predispositions or anomalies in the review. Academic achievements variable comprehends the degree of formal training and information accessible to the members. Occupation variable dissects the connection between the work people do and their perspectives, values, and ways of behaving.

LGBTQ+ Cooperation - This variable can help investigate and grasp the degree of openness, acknowledgment, and inclusivity inside the example populace. Sexual attraction variable inspects and figure out the variety of sexual orientations inside the example.

This research exploration centers on on to examine the connection between socio-segment factors (age, orientation, and schooling) and the sexual orientations in Lucknow city. The empirical exploration will utilize an irregular example of 55 respondents picked on a comfort premise. Information will be gathered through reviews, and a twofold calculated relapse model will be utilized to inspect the relationship. Reliability inspection, chi-square tests, descriptive test and other sample-based inferences tests will be applied to decide the concept of the sexual orientations in selected research area.

$$\varphi = \zeta x_1 + \lambda x_2 + \omega x_3 + \varepsilon$$

Where:

- φ is the dependent variable representing sexual orientation.
 x_1 represents the covariate gender.
 x_2 represents the covariate education.
 x_3 represents the covariate occupation
- ε represents the error term in the regression model.

The coefficients ζ , λ , and ω represent the effect of each covariate and interaction term on the probability of having a non-heterosexual sexual orientation

14.5 ANALYSIS AND DISCUSSION

Descriptive Statistics

Table-14.1: Education Level

		Frequency	Percent	Valid Percent	Cumulative Percent
Valid	Graduate	18	32.7	32.7	32.7
	High School Student	1	1.8	1.8	34.5
	Postgraduate	18	32.7	32.7	67.3
	Undergraduate	18	32.7	32.7	100.0
	Total	55	100.0	100.0	

Source: Primary Data

Out of the 55 respondents, 32.7% were graduates, 1.8% were high school students, 32.7% were postgraduates, and 32.7% were undergraduates.

The cumulative percent shows the total percentage of respondents up to that point. For example, 34.5% of respondents had a high school education or below, while 67.3% had at least a graduate or postgraduate education.

Table-14.2: Occupation

		Frequency	Percent	Valid Percent	Cumulative Percent
Valid	Accountant	9	16.4	16.4	16.4
	Banker	9	16.4	16.4	32.7
	Doctor	9	16.4	16.4	49.1
	Engineer	9	16.4	16.4	65.5
	Lawyer	9	16.4	16.4	81.8
	Student	1	1.8	1.8	83.6
	Teacher	9	16.4	16.4	100.0
	Total	55	100.0	100.0	

Source: Primary Data

The most common occupations among the respondents were accountant, banker, doctor, engineer, lawyer, and teacher, each with 16.4% of the respondents.

- ✓ 1.8% of respondents identified themselves as students.

- ✓ The cumulative percent shows the total percentage of respondents up to that point. For example, 49.1% of respondents were doctors, engineers, lawyers, or teachers.

Table:14.3: LGBTQIA+ Interacted

		Frequency	Percent	Valid Percent	Cumulative Percent
Valid	No	13	23.6	23.6	23.6
	Yes	42	76.4	76.4	100.0
	Total	55	100.0	100.0	

Source: Primary Data

- ✓ 76.4% of respondents reported that they had interacted with LGBTQIA+ individuals.
- ✓ 23.6% of respondents reported that they had not interacted with LGBTQIA+ individuals.

Table-14.4: Sexual Orientation Choice

		Frequency	Percent	Valid Percent	Cumulative Percent
Valid	No	42	76.4	76.4	76.4
	Yes	13	23.6	23.6	100.0
	Total	55	100.0	100.0	

Source: Primary Data

- ✓ 76.4% of respondents reported that they did not have a choice in their sexual orientation.
- ✓ 23.6% of respondents reported that they did have a choice in their sexual orientation.
- ✓ 87.27% of respondents believed that Indian culture does influence their perceptions about sexual orientation.
- ✓ 12.7% of respondents believed that Indian culture does not influence their perceptions about sexual orientation (Luhtanen and Vilmas, 2017).

Table-14.5: Indian Culture's Influence on Perceptions about Sexual Orientation

		Frequency	Percent	Valid Percent	Cumulative Percent
Valid	No	7	12.7	12.7	12.7
	Yes	48	87.27	87.27	100.0
	Total	55	100.0	100.0	

Source: Primary Data

14.6 CONCLUSION

In the research study, one may draw the conclusion about directions and status of sexual orientation in selected sample research domain that most of the covariates inspected in this study don't impact discriminations about sexual leaning. Orientation, schooling level, and occupation don't show a genuinely huge relationship with these discernments. It is critical to take note of that some covariates, like occupation, exhibit incredibly high $Exp(B)$ values, yet these outcomes ought to be deciphered circumspectly because of the absence of measurable importance. One outstanding finding from the examination is that people who have communicated with LGBTQIA people have an essentially higher probability of being impacted by Indian culture in their discernments about sexual direction. Such communications increment the chances of social impact by 173.3%, contrasted with the individuals who have not had these associations. This focuses to the possible effect of individual encounters and openness to different viewpoints in forming perspectives towards sexual direction in the Indian setting. It means a lot to see these outcomes inside the more extensive setting of the socio-social climate in India. By and large, sexual direction has been a quarrelsome subject in the country, with winning cultural standards and social convictions frequently criticizing people who distinguish as LGBTQIA+. Be that as it may, there has been an ever-evolving shift lately towards more noteworthy acknowledgment and acknowledgment of LGBTQIA+ privileges. This shift is reflected in the milestone High Court administering in 2018, decriminalizing consensual same-sex relations between grown-ups. The finding was a critical stage towards conceding equivalent privileges and coverage to the LGBTQIA+ people group

REFERENCES

1. Byrne, R., Calabrese, S. K., & Barlow, B. (2019). *The Impact of Societal Factors on LGBT Individuals' Mental Health*. *Current Psychiatry Reports*, 21(6), 47.
2. Cannon, John Ashton. "Homosexuality in Medieval Europe." *World History Encyclopedia*, World History Encyclopedia, 9 Dec. 2019, www.worldhistory.org/article/1519/homosexuality-in-medieval-europe/.
3. Creswell, J. W., & Poth, C. N. (2017). *Research design: Qualitative, quantitative, and mixed methods approaches* (5th ed.). Sage Publications.
4. Donnelly, D., Burgess, V., Anderson, I., Davis, P., & Derichs, A. (2019). *Cross-National Comparisons of Public Attitudes towards Homosexuality*. *Journal of Homosexuality*, 66(1), 1-20.
5. Gary Wenk "Brain Differences Linked to Sexual Orientation" www.psychologytoday.com
6. Knutson, A. K., Garcia, J. R., & Harper, G. W. (2020). *The Role of Culture in Shaping Attitudes toward Bisexual Individuals*. *Archives of Sexual Behavior*, 49(3), 917-929.
7. Luhtanen, R. K., & Vilmas, A. (2017). *Cultural Worldviews and Attitudes toward LGBT People: A Meta-Analysis*. *Journal of Homosexuality*, 64(2), 198-218.
8. Momin Rahman, "The Globalisation of Homophobia", *Race & Class*, Volume 54, Issue 2, (2012): 22-39, <https://journals.sagepub.com/doi/10.1177/0306396812459377>
9. Ochs, I. M., Horn, S. S., & Kosciw, J. G. (2018). *Cultural and Gender Identity Influences on the Coming-out Experiences and Perceptions of Parents of LGBT Youth*. *Journal of Marriage and Family*, 80(3), 679-692.
10. Payoshni Mitra, "Securing Queer Rights: Colonialism, the British Empire and India's Section 377", *Journal of Human Rights Practice*, Volume 9, Issue 1, (2017): 129-144, <https://academic.oup.com/jhrp/article/9/1/129/4728832>
11. Plato. "Symposium." *Project Gutenberg*, www.gutenberg.org/files/1600/1600-h/1600-h.htm.
12. Sekaran, U., & Bougie, R. (2016). *Research methods for business: A skill-building approach* (7th ed.). Wiley.